

Prospekt Nr. 2



Display tables
Folding tables
Element tables
Ebb/Flow tables



Type NP/EF

Mobile or stationary

All-welded sturdy base frame with longitudinal and cross broaching made of galvanized steel (also available of aluminium) with push-in posts. The construction to hold the tray is completely of aluminium.

Plastic ebb/flow tray to be inserted.

All-welded upper frame, no push – in system.

Handsome profiled edge.

Standard design

with ebb/flow top, grey, watertight

Length x width in mm

2020x1020	3020x1020	*4020x1020
2020x1220	3020x1220	*4020x1220
2020x1620	3020x1620	*4020x1620

2520x1020	3520x1020
2520x1220	3520x1220
2520x1620	3520x1620

Special accessories

- Height adjustment device
 - 4x 125 mm swivel casters with rubber tires
(2 are locking)
- Removable table top for ebb/flow tray with base plate
- Simple water outlet
 - Water outlet with GK fitting
 - Water outlet with ebb/flow valve
 - Larger wheels (160 mm)
 - Middle support recommended for tables marked with an*



Type NP

Display tables for a mobile presentation Mobile or stationary



Rugged all-welded base frame construction made of galvanised steel (also available of aluminium) with push-in posts.

The construction to hold the tray is completely made of aluminium.

Welded upper frame, no push-in system.

Handsome profiled edge with radius corners (smooth edges to prevent injuries)

Wheels: 4 x 125 cm swivel casters (2 with brake)

KANO standard design:

With aluminium sheet cover

Watertight with built-in water outlet

Lengthx width

mm mm

2000 x 1000

2500 x 1250

3000 x 1500

4000 x 1250 *

4000 x 2000 *

Special accessories :

Height adjustment device

Without casters as stationary tables

Removable table tops

Folding feet Simple water outlet

Water outlet with GK fitting

Larger rubber tyres (160 mm)

recommended for tables marked with an *

Middle support recommended for tables

marked with an *

Type NP/K

Mobile or stationary

Simple-practical-useful!

Rugged aluminium display tables with folding legs of zinc-plated steel.

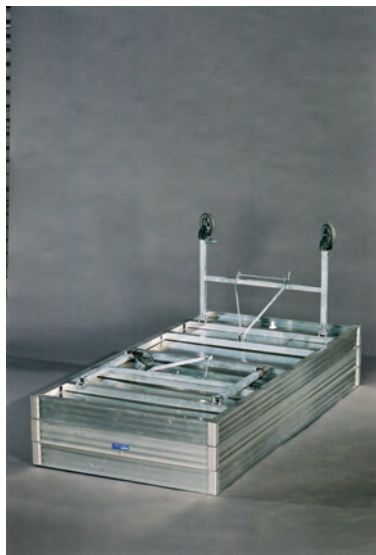
Stylish profiled edge.

Removable threaded plastic feet for levelling (p.16)



Display tables NP-folding legs-with casters

KANO Standard design



Covered with watertight
watertight
aluminium sheet

Length x Width in mm

2000 x 1000
2500 x 1250
3000 x 1500

With ebb/flow top, grey,

Length x Width in mm

2040 x 1000
2000 x 1200
2020 x 1620
2500 x 1000
2500 x 1200
3000 x 1020
3020 x 1220
3000 x 1500
3000 x 1600

Accessories:

4 x 125 mm swivel casters with rubber tires
(2 are locking)
Simple water outlet
Water outlet with GK fitting
Water outlet with ebb/flow valve

Display table NP with folding legs, stacked

Reasonable table system Type NP/E

Element tables with push in legs



Standard masses :

2000 x 1000 mm 4 feet
2500 x 1250 mm 4 feet
3000 x 1500 mm 6 feet

Execution:

Special degree possible

Sturdy aluminium table frame with profile edge.
Cover: aluminium sheet-watertight.
Push in legs from aluminium square tube.
Turntable off synthetic material plates as a height adjustment.

Accessory:

Water outlet, tire Ø125 mm, 2 with brake



Element Table

Versatile – stackable – knock-down type – optimal presentation

Type NP/E

Sturdy aluminium table frame with profiled edge. Cover: aluminium sheet, watertight. Push-in legs with adjustment. Easy to knock down.

All sizes available for all flower boxes and tubs



Available in triangular, square and rectangular from also in colours.

The tables can be arranged side by side and one on top of the other allowing various designs.

Element Tables

Versatile – stackable – knock – down – type – optimal presentation

Type NP/E

Sturdy aluminium table frame with profile edge.
Cover: aluminium sheet, watertight.
Push-in legs with adjustment.
Easy to knock down.



Standard dimensions:

NP/E Square

length x width x height/mm

750 x 750 x 300
1000 x 1000 x 300
1250 x 1250 x 300
1500 x 1500 x 300

NP/ED Triangle

length x width x width x height/mm

1000 x 1000 x 1400 x 300
1250 x 1250 x 1760 x 300
1250 x 1250 x 2150 x 300

NP/ER Rectangle

length x width x height/mm

750 x 1000 x 300
1000 x 1250 x 300
1000 x 1500 x 300
1250 x 1500 x 300

Standard height of legs in 300 mm.
other leg lengths available: 400,500,600,700 and 800 mm

Special size available!

Accessories:

- simple water outlet
- Water outlet with GK fitting
- 125 mm casters with tires



Hexagonal Tables

Type NP/ES

Handsome hexagonal aluminium tables with watertight tray. Push-in legs with adjustable disc-type feet. Easy to knock-down. Height as required.

Standard dimension: NP/ES hexagonal

Ø 750 mm
Ø 1000 mm
Ø 1250 mm
Ø 1500 mm

Extras:

- Water outlet
- Powder coating



Type NP/EB

Handsome hexagonal aluminium tables with watertight tray. Push-in legs with adjustable disc-type feet. Easy to knock-down. Height as required.

Standard dimensions Type NP/EB

Ø 1000 mm
Ø 1250 mm
Ø 1500 mm

Extras:

- Water outlet
- Powder coating



Ebb/Flow Tables

Mobile or fixed

Type NP/A

Sturdy, reinforced, height-adjustable substructure with or without casters.
Basic shelf of gusset plate, from 3500 mm length
Top: ebb/flow, grey plastic plates or aluminium sheet

Solid design to meet highest standards!

Tables are available in standard widths as follows:

1020 mm	1520 mm	1820 mm
1220 mm	1620 mm	1920 mm
1420 mm	1720 mm	2020 mm

Tables are available in all according lengths and are mobile up to 4000 mm



Type NP/A with casters



NP/A with Gardena fitting



Type NP/A Base frame



Type NP/A (wheel/substructure)

Type NP/A

Mobil or fixed



Sturdy, enforced, height-adjustable substructure with or without casters.

Basic shelf of gusset plate, from 3500 mm length

Top: ebb/flow, grey plastic or aluminium sheet

Tables are available in standard widths as follows:

1.020 mm	1.520 mm	1.820 mm
1.220 mm	1.620 mm	1.920 mm
1.420 mm	1.720 mm	2.020 mm

Tables are available in all according and are mobile up to 4000 mm



Aluminium Greenhouse Tables, Type NP/GT**Design:**

Solid high-quality 40 mm square tube substructure with diagonal bracing. Sturdy upper table frame of special T-profile aluminium.

500 mm maximum distance of upper frame H-beams.

No direct permanent connection between zinc-plated steel and aluminium.

Corrosion-protected through special polyamide seat.

Easy self-assembly.

Attractive design with radius corners and profiled edge.

Customised sizes and designs.

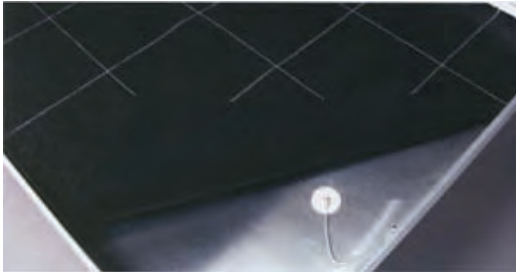
Table tops as required-aluminium sheet or ebb/flow tray.

Accessories:

- Holders for hanging flowerpots
- Removable tray top
- Marking system
- Bow-type shading



Flor Depot



Vivaplus

Standard (no Picture)



Height adjustment device for tables

Item No. NP/H

Tables NP, NP/EF, NP/A and NP/R 132, 134 and 135 are available with a height adjustment device. A special polyamide. Shoe connects the steel base frame and the aluminium tray.

All tables are available with different water outlets!

Item Nr. 170 WA Simple Water Outlet



Item Nr. 170 WA/GK Water outlet with GK fitting



Item Nr. 170 WA/EF Water outlet ebb/flow



Watered Planting Table NP/W

Mobile or fixed

Sturdy, galvanized basic construction
push-in side parts for easy knock-down.
Handsome, sturdy and easy-to-handle.
Special-profile base frame for watertight aluminium tray.
H-beam spacing 300 to 500 mm
According to table size.
angular welded corners.
Inserted watertight 2,0 mm aluminium-sheet
tray for water lilies and other aquatic plants.



Length x width in mm

Rim height in mm

1800 x 800	250 mm
2400 x 800	250 mm
2500 x 1200	250 mm
3000 x 1200	250 mm

Accessories: Water outlet, Wheels: 125 mm

Immersion table item No. 136

Galvanised steel construction
sturdy, removable aluminum tank.
Water outlet with GK fitting.
Removable open-grid shelf
Suitable as display table for water plants
Wheels: 125 mm 4 swivel casters (2 with brake)

Item Nr. 136

Length :	1260 mm
Width:	625 mm
Height:	770 mm
Tank :	1260 x 625 x 245 mm

Item Nr. 136 A

Length :	1560 mm
Width:	625 mm
Height:	770 mm
Tank :	1560 x 625 x 245 mm



Easy irrigation

All KANO display tables can be provided with an automatic irrigation system.

Accessories to fit all tables offered

Tray 160 L

Tray 220 L

Standards pump with table-mounted water inlet $\frac{3}{4}$ inch stainless steel housing, hose and protection against dry running



Water collecting pipe

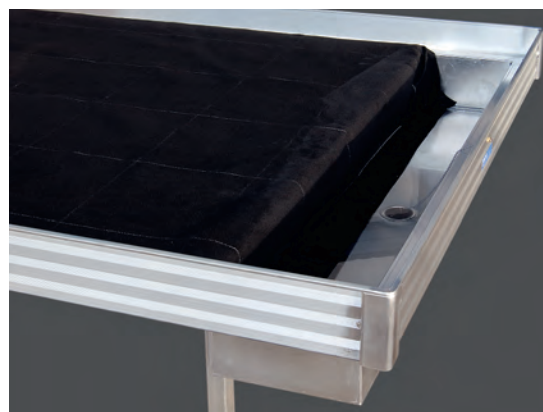
Fits all KANO tables

Capacity as required

Accessories:

Simple water outlet

Water outlet with GK coupling



Sign Holders

Slip-on for table edges or plastic boxes

- Item No. 8116 DIN A 5 size, 21,5 x 15 cm
- Item No. 8116 L DIN A 5 size, 21,8 x 15,5 cm lamina
- Item No. 8118 DIN A 4 size, 29 x 21 cm
- Item No. 8118 L DIN A 4 size, 30,5 x 21,7 cm lamina



Sign Holders

Consisting of

- Item No. 814 Foot simple
- Item No. 814/1 Foot double
- Item No. 850/4 Pole, 40 cm length
- Item No. 850/5 Pole, 50 cm length
- Item No. 850/6 Pole, 60 cm length
- Item No. 850/7 Pole, 70 cm length
- Item No. 850/8 Pole, 80 cm length

Picture holders, one-sided, with attachments For fixing on poles No. 850

- Item No. 8100 DIN A 5 size, 21,5 x 15 cm
- Item No. 8100 L DIN A 5 size, 21,8 x 15,5 cm laminated
- Item No. 820 DIN A 4 size, 29,7 x 21 cm
- Item No. 820 L DIN A 4 size, 30,5 x 21,7 cm laminated



Price Marking Systems for Display Tables

Item No. 845	Plate-type shoe
Item No. 910	Vertical tube, 750 mm length (or to specification)
Item No. 915/100	Cross tube, 1000 mm length
Item No. 915/150	Cross tube, 1500 mm length
Item No. 915/200	Cross tube 2000 mm length
Item No. 915/250	Cross tube, 2500 mm length
Item No. 915/300	Cross tube, 3000 mm length

Zinc-plated design



Holding devices for pictures, double sided

Item No. 813/15	DIN A 5 size, 21,5 x 15 cm
Item No. 813/15 L	DIN A 5 size, 21,8 x 15,5 cm laminated
Item No. 823/15	DIN A 4 size, 29,7 x 21 cm
Item No. 823/15 L	DIN A 4 size, 30,5 x 21,7 cm laminated



Table Accessories

Holder for hanging flowerpots,

Item No. NP/AH

Sturdy galvanized tubular steel construction
to within the table or to attach to
(adjustable height) see ill

Item Nr.	Length	Width	Height
NP/AH 150	1500	1000	1600 mm
NP/AH 200	2000	1000	1600 mm
NP/AH 250	2500	1250	1600 mm
NP/AH 300	3000	1250	1600 mm
NP/RH	Special holder, zinc-plated, with screw down plate		



Removable top for tables

Item No NP/TA

Strong galvanized tubular steel legs.
Watertight aluminium tray.
standard width 320 mm (other widths available)

Item Nr	Length	Width	Height
NP/TA 150	1500	320	740 mm
NP/TA 200	2000	320	740 mm
NP/TA 250	2500	320	740 mm
NP/TA 300	3000	320	740 mm



Bow-type shading device

Item No. NP/SB

All tables are available with-type shading device.
Bows are 20 mm galvanized tube seats on two
sides of the frame allow height adjustment.

Item No	Width	Height
NP/SB 100	1000	800 mm
NP/SB 125	1250	800 mm
NP/SB 150	1500	800 mm
NP/SB 160	1600	800 mm

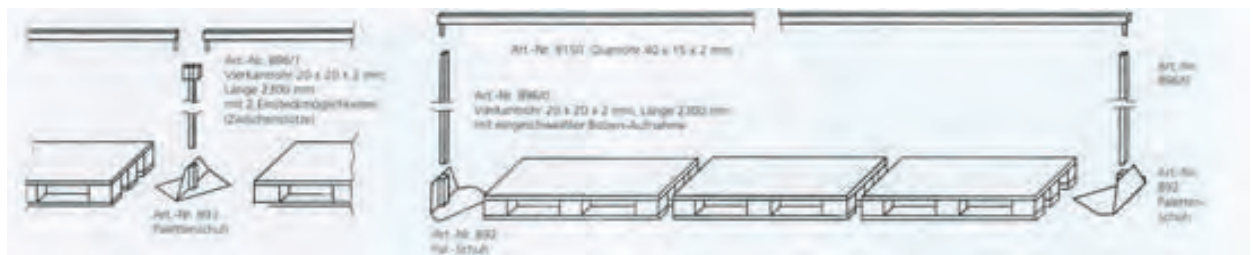


Price Marking Systems – EURO Pallet Line



Item No. Description

892	Palette shoe
893	Middle shoe
896/0	Vertical tube
896/1	Intermediate support
915	Cross tube, length up to 1600 mm
9150/1	Cross tube, length 1601 to 2500 mm
9150/2	Cross tube, length 2501 to 3000 mm
9150/3	Cross tube, length 3001 to 3500 mm
9150/4	Cross tube, length 3501 to 4000 mm
823/15	Picture holder for DIN A 4 size
823/15 L	Picture holder for DIN A 4 size laminated
825/15	Picture holder for DIN A 5 size
825/15 L	Picture holder for DIN A 5 size laminated

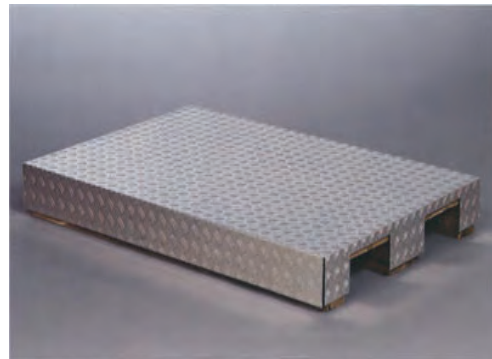


Fork Lift Truck Handling Equipment - Euro - Tray**Euro Tray**

- * Dimensions 1200 x 800 mm
- * Sturdy aluminium rim profiles – 120 mm high
- * Aluminium sheet covering
- * H-beams for stabilizing
- * Rounded corner profiles
- * Corners formed as holding angles
- * Stackable
- * Clearance from ground 160 mm
- * Available with water outlet

**EURO pallet covering****Type PV/2 (no illustration)**

Pallet covering made from aluminium checker plate to fit EURO pallets 800 x 1200 mm
2 sides are canted.

**Type PV/4**

Pallet covering made from aluminium checker are canted, from openings for fork lift trucks

Tanks to EURO pallets**Type AW**

- Fits Euro-pallets 1200 x 800 mm
- * Rugged aluminium edge profile, 120 mm height
 - * Aluminium sheet top
 - * H-beams ensure strength
 - * Rounded corner profiles
 - * Corners as holding angle

**Accessories:**

Stackable
Water outlet

EURO Wanne

1200 x 800 mm



Planting Table with Pull-out Planting Tray**Item No. 135 P or 135 A/P**

Sturdy galvanised plant and work with pull-out planting tray for planting tubs and flowers boxes.

Tray with 250 mm rim

Wheels as required:

160 mm, 2 swivel casters, 2 with brake

Item No.	Length	Width	Height
135 P	2000	900	920 mm
135 A/P	2500	900	920 mm

Rims up to 500 mm available.

Dimensions of pull-out device including tray:

Width: 1100 mm-Depth: 500 mm – Height: 150 mm

Tray also available in stainless steel

**Planting table with adjustable potting device****Item No. 135 T or 135 A/T**

Sturdy, galvanised planting and work table with vertically and horizontally adjustable potting device, revolving and lock-type, foot-operated.

Tray with 250 mm rim

Rims up to 500 mm available

wheels as required:

160 mm, 4 swivel casters, 2 with brake

also available without wheels and with push-in feet.

Item No.	Length	Width	Height
135 T	2000	900	920 mm
135 A/T	2500	900	920 mm



Pot cut-outs of wood available in various diameters.
tray also available in stainless steel.

Planting and work table Item No. 135**Item No. 135 S****Design:**

Sturdy galvanized steel construction.
Bottom shelf zinc-plated steel sheet
Worktop of 2.0 mm zinc-plated steel sheet or stainless steel.
250 mm high three-sided rim (higher rims available).
Push-in tubular frame construction.
Wheels. 4 x 160 mm swivel casters (2 with brake)

Item No.	Length	Width	Height
135 K	1500	920	920 mm
135 S	2000	920	920 mm
135 A	2500	920	920 mm



Planting table with removable bench + drawer

Accessories :

- Removable bench
- Drawer
- Middle shelf
- Height adjustment
- Also available without wheels with fixed feed

Work Table Item No. 134**Design :**

Rugged galvanized steel construction.

Push-in side parts allow easy knocking down.

Cover: bottom shelf – 1.5 mm galvanised steel sheet
also available in stainless steel

Cover: worktop – 2.0 mm galvanised steel sheet
also available in stainless steel.

Wheels: 4 x 160 mm casters (2 with brakes)



Item. No.	Length	Depth	Height
134 K	1450	880	920 mm
134 S	1950	880	920 mm
134 A	2450	880	920 mm

Accessories:

Height adjustment

Drawer

Additional middle shelf

Also available without wheels with fixed feet



Work Table Item No. 134**Design :**

Rugged galvanised steel construction.

Push-in side parts allow easy knocking down.

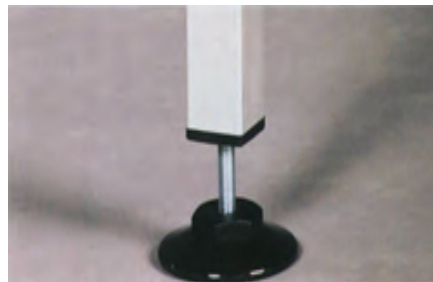
Cover: bottom shelf – 1.5 mm galvanised steel sheet

Also available in stainless steel

Cover: worktop – 2.0 mm galvanised steel sheet

Also available in stainless steel.

Wheels: 4 x 160 mm casters (2 with brakes)



Item. No.	Length	Depth	Height
134 K	1450	880	920 mm
134 S	1950	880	920 mm
134 A	2450	880	920 mm

Accessories:

Height adjustment

Drawer

Additional middle shelf

Also available without wheels with fixed feed



Mobile Sales Counter, Item No. 132**Design :**

Sturdy galvanized tubular steel construction.

Zinc-plated steel – sheet bottom.

Worktop: 2.0 mm zinc-plated steel sheet,
also available with stainless-steel top.

Table substructure features diamond-pattern
aluminium enclosure on three sides.

2 of the 4 swivel 160 mm rubber casters have brakes

Item No.	Length	Depth	Height
132 K	1450	880	920 mm
132 S	1950	880	920 mm
132 A	2450	880	920 mm

Accessories:

*Height adjustment

*Drawer

*Middle shelf

*Also available without rubber casters, with fixed feet





Mobile sales counter Item No. 232

- Body: Aluminium Square
 Ground floor: Aluminium sheet lining
 Trim: decorative laminates plates 8,0 mm thick.
 Maple décor, concrete optics or aluminium perforated sheet.
 Countertop: 19 mm Resopalplate or 1,0 mm stainless steel plate
 Tires: diameter 100 mm, 4 swivel, 2 with brake
 Options: shelf, Paperdispenser, drawer, larger tires

Art. Nr.	Length x Width
232 M	1000 x 600 mm
232 K	1500 x 800 mm
232 S	2000 x 800 mm

Wheels: 100 mm, 4 swivel castors, 2 with brakes



Counter – Design

Stationary or mobile



This elegant sales counter can easily be enlarged and used in various combinations. The counters are individual products, manufactured in modular design an to the customer`s requirements. Straight parts, angular and diagonal variations can be mixed and matched as required.

Material (body)

Solid decorative laminated panels, scratch-proof, 19 mm thickness (various patterns available).

Work surface:

40 mm Multiplex panels, coated on both sides, extremely hard and scratch-proof laminated surface.

Castor (optional)

4 swivel castors, 70 mm high, 2 swivel castors with brakes, solid rubber, non-marking

Base:

VA pattern-60 mm height

Place of deposit for bags:

40 mm Multiplex panel, coated on both sides, colour according to sample



Shelves:

22 mm Multiplex panel, coated an both sides

Writing board for customer`s use

40 mm Multiplex panel, coated on both sides, set on stainless steel supports, grain 240, ground

Drawer:

Same material as panels. Drawer front in the same pattern as the front
Full extension
Automatic retraction
Dampers

Decorative stands

of aluminium-duet sheet

Item-No. 201/1

200 x 200 x 200 mm

Item-No. 201/2

250 x 250 x 250 mm

Item-No. 201/3

300 x 300 x 300 mm

Item-No. 201/4

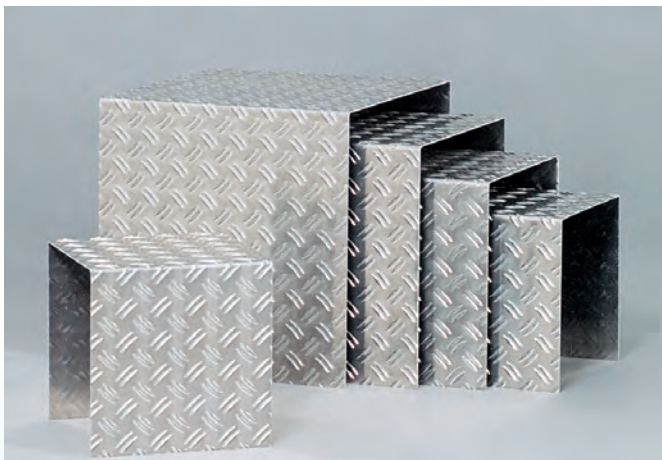
350 x 350 x 350 mm

Item-No. 201/5

400 x 400 x 400 mm

Item-No. 201/S

Satz / 5 Stück

**Item-No. 201/S – Set = 201/1 – 201/5****Item-No. 201 decorated**

KANO Stahlbau- und Transportgeräte GmbH

Ziegeleistraße 13

64560 Riedstadt-Erfelden

Tel.: (0 61 58) 918 36-0

Fax: (0 61 58) 918 36-20

Internet: www.kano-transportgeraete.deE-Mail: mail@kano-transportgeraete.de

Representation in Switzerland:

gvz-rossat ag/sa

Industriestrasse 10

CH-8112 Otelfingen

Tel.: +41 (0)44 271 22 11

Fax: +41 (0)44 271 76 73

www.gvz-rossat.chinfo@gvz-rossat.ch

Representation in Norway:

L.O.G AS

Brobekkveien 104 B

N-0582 Oslo

Phon +47 815 20 100

Faks +47 815 20 101

www.log.no · firmapost@log.no